

Q.1 If the average of 20 numbers is zero, how many numbers could be greater than zero?

[Marks:1]

Options :

- a. 19
- b. 49
- c. 17
- d. 33

• **Correct Answer : a**

Q.2 The dimensions of a hall are 40 m, 25 m and 20 m. If each person requires 200 cubic meters, find the number of persons who can be accommodated in the hall. [Marks:1]

Options :

- a. 150
- b. 140
- c. 120
- d. 100

• **Correct Answer : d**

Q.3 A cyclist moving at a speed of 20 km/hr crosses a bridge in 2 minutes. What is the length of the bridge?

[Marks:1]

Options :

- a. 555.5 m
- b. 444.4 m
- c. 777.7 m
- d. 666.6 m

• **Correct Answer : d**

Q.4 The value of  $(0.333\dots) \times (0.444\dots)$  is

[Marks:1]

Options :

- a. 0.121212....
- b. 1.3333....
- c. 0.777.....
- d. 0.148148148.....

• **Correct Answer : d**

Q.5 In a 100 m race, A covers the distance in 36 seconds and B covers in 45 seconds. In this race, A beats B by \_\_\_\_\_?

[Marks:1]

Options :

- a. 20 m

- b. 25 m
- c. 22.5 m
- d. 9 m

- **Correct Answer : a**

**Q.6** The sides of a triangle are in the ratio 10: 24:26 and its perimeter is 300 m. What is its area? [Marks:1]  
(Answer to be provided in m<sup>2</sup> )

- **Correct Answer : 2500**

**Q.7** If  $(\sqrt{3})^5 \times 9^2 = 3^x \times 3\sqrt{3}$ , then x equals [Marks:1]

- **Correct Answer : 5**

**Q.8** The respective ratio of milk and water in a solution is 7: 9. After adding 8 litres another solution in which concentration of milk is 50%, the respective ratio of milk and water becomes 4: 5. Find the original quantity of milk present in the solution? [Marks:1]  
(Answer to be provided in litres)

- **Correct Answer : 28**

**Q.9** Shatabdi Express has a capacity of 600 seats out of which 15% is in the Special VIP class, rest being VIP class seats. During its journey the train was booked to 80% of its full capacity. If Special VIP class was booked to 70% of its capacity, how many VIP class seats were empty during that journey? [Marks:1]

- **Correct Answer : 93**

**Q.10** How many times the hands of a clock coincide in a day? [Marks:1]

- **Correct Answer : 22**

**Q.11** If the units of length, mass and time each be doubled, the unit of force is increased by [Marks:1]

**Options :**

- a. 2 times
- b. 4 times
- c. 8 times
- d. No change

- **Correct Answer : d**

**Q.12** Universal time is based on [Marks:1]

**Options :**

- a. Rotation of the earth on its axis
- b. Earth's orbital motion around the earth
- c. Vibrations of caesium atom
- d. Oscillation of quartz crystal

- **Correct Answer : c**

Q.13 Which of the following is not the name of a physical quantity?

[Marks:1]

**Options :**

- Kilogram
- Impulse
- Energy
- Density

- **Correct Answer : a**

Q.14 Psychometric scaling is referred to

[Marks:1]

**Options :**

- Thermal Comfort
- Subjective weighting
- Frequency of sound
- Color intensity

- **Correct Answer : a**

Q.15 Absorption of sound in a porous material is mainly due to

[Marks:1]

**Options :**

- Frictional loss
- Creep loss
- Vacuum in the pores
- None of the above

- **Correct Answer : a**

Q.16 The ratio of light that a surface reflects compared to the total sunlight that falls on it is called

[Marks:1]

**Options :**

- Thermal reflectance
- Diffusivity
- Emissivity
- Albedo

- **Correct Answer : d**

Q.17 What is the reciprocal of air-to-air resistance?

[Marks:1]

**Options :**

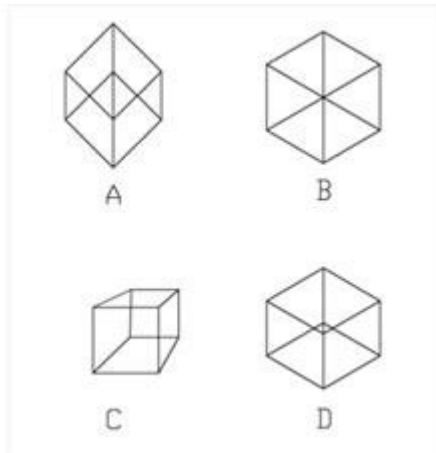
- U- value
- Conductance

- c. Capacitance
- d. R- Value

• **Correct Answer : a**

**Q.18** Which of the following wire diagrams of a cube is an isometric view

[Marks:1]



**Options :**

- a. A
- b. B
- c. C
- d. D

• **Correct Answer : b**

**Q.19** In the 3 Dimensional figure shown below some of the surfaces are shaded completely and some others partly. From the area of the visible surfaces what is the percentage of area not shaded?

[Marks:1]



**Options :**

- a. 33.33%
- b. 45.55%
- c. 50%
- d. 66.67%

• **Correct Answer : d**

Q.20 Which of the following is incorrect?

[Marks:1]

Options :

- a. An in centre is a point where the angle bisectors meet.
- b. The median of any side of a triangle bisects the side at right angle.
- c. The point at which the three altitudes of a triangle meet is the orthocentre
- d. The point at which the three perpendicular bisectors meet is the centre of the circumcircle.

• **Correct Answer : b**

Q.21 When two lines intersect what is the shortest distance between them?

[Marks:1]

Options :

- a. 0
- b. 1
- c. 2
- d. 0.5

• **Correct Answer : a**

Q.22 The angles of a triangle are in the ratio 1:2:7. What is the measure of the smallest angle?

[Marks:1]

• **Correct Answer : 36**

Q.23 The length of a rectangular plot is 40 meters more than its breadth. If the total cost of fencing the plot at Rs.50 per meter is Rs. 10,000, what is the length of the plot in meters?

[Marks:1]

(Answer to be provided in m)

• **Correct Answer : 100**

Q.24 The sum of the measures of the angles of regular polygon is  $2160^\circ$ . How many sides does the polygon have?

[Marks:1]

• **Correct Answer : 14**

Q.25 Find the area of a square, one of whose diagonals is 9.2 m long.

[Marks:1]

(Provide answer in sq m)

• **Correct Answer : 42.32**

Q.26 Choose the word with correct spelling from among the following:

[Marks:1]

Options :

- a. tyranny
- b. tyrrany
- c. tyrany
- d. tyrranny

• **Correct Answer : a**

Q.27 An individual who is unable to express or interact easily is called a \_\_\_\_\_.

[Marks:1]

**Options :**

- a. Extrovert
- b. Introvert
- c. Ambivert
- d. Torrent

• **Correct Answer : b**

Q.28 Choose from the following, the correct **synonym** of the given word “Exorbitant”

[Marks:1]

**Options :**

- a. Odd
- b. Ridiculous
- c. Excessive
- d. Threatening

• **Correct Answer : c**

Q.29 Choose from the following, the correct **antonym** of the given word “Suspend”

[Marks:1]

**Options :**

- a. Pend
- b. Switch
- c. Resume
- d. Turn on

• **Correct Answer : c**

Q.30 Choose the correct word that best fits in the blank:

[Marks:1]

“After attending a career counselling session, he understood that his \_\_\_\_ was cooking”

**Options :**

- a. supplant
- b. niche
- c. replacement
- d. on

• **Correct Answer : b**

**Paragraph:**

Traditionally, beauty pageants focused on the physical attributes of the contestants. Pageants have now evolved to include inner beauty counting on personality, intelligence, talent, character, and social and charitable involvement. In the year 1994, Sushmita Sen created history by winning the Ms Universe title for the first time for India. In 2021, Harnaz Kaur Sandhu is the third entrant from India to win Miss Universe after Lara Dutta.

Sandhu is a model from Chandigarh, Punjab in India. She has already won several beauty contests such as Miss Diva 2021, and Femina Miss India Punjab 2019, and she was also among the top 12 in Femina Miss India 2019. Among all her wins 70th Miss Universe beauty pageant in Israel, the Southern Red coastal city of Eilat on December 30 in 2021 got her worldwide recognition.

Beauty pageants are known for their tricky questions as well as inspiring answers. Sandhu's quick reply in the first round has brought back the crown to India after over two decades. The Internet is abuzz with pictures, quotes, and videos for all the right reasons.

Host Steve Harvey asked the 21-year-old Sandhu - "what advice she would give to young women on how to deal with the pressure they face today". She eloquently replied, "well I think the biggest pressure the youth of today is facing is to believe in yourself. You know that you are unique and that's what makes you beautiful. Stop comparing yourself with others and let's talk about more important things that are happening worldwide. I think this is what you need to understand. Come out, speak for yourself, because you are the leader of your life, you are the voice of your own life and I believe in myself and that's why I am standing here today.

**Q.31** Which of the following beauty contests Harnaaz has never won? [Marks:1]

**Options :**

- a. Miss Diva 2021
- b. Femina Miss India Punjab 2019
- c. Miss World 2021
- d. Femina Miss India 2019

• **Correct Answer : c**

**Q.32** Find the correct chronology of Miss Universe winners from India. [Marks:1]

**Options :**

- a. Lara Dutta < Harnaaz Sandhu < Sushmita Sen
- b. Sushmita Sen < Lara Dutta < Harnaaz Sandhu
- c. Harnaaz Sandhu < Sushmita Sen < Lara Dutta
- d. Lara Dutta < Sushmita Sen < Harnaaz Sandhu

• **Correct Answer : b**

**Q.33** 'Eloquently' means to speak in an expressive way. Which of the following is not a synonym of eloquently? [Marks:1]

**Options :**

- a. persuasively
- b. articulately
- c. fluently
- d. hesitatingly

• **Correct Answer : d**

**Q.34** "Internet is a buzz with pictures, quotes and videos for all the right reasons". What reasons is being talked about in the above statement? [Marks:1]

**Options :**

- a. Harnaz won the Miss World 2021
- b. Harnaz won the Miss Universe 2021
- c. Lara Dutta won Miss Universe title after 21 years
- d. Sushmita Sen won the Miss World 1994

• **Correct Answer : b**

**Paragraph:**

Digital art is an artistic work or practice that uses digital technology as part of the creative or presentation process.

**(A)** One of the forms of digital art is **pixel art** where images are built with the exclusive and intentional placement of pixels.

**(B)** **Digital photo painting** permits photographs to be turned into enchanting paintings produced in any style as desired.

**(C)** **Digital collage** is another form of art that is created by layering together virtual images from various sources into a new piece of art.

**(D)** **3 D painting** is an art form that allows one to paint a texture straight on to a 3 D model. This is similar to 2D painting but requires knowledge of texturing and working with 3D assets.

From the given set of 4 digital art images identify which category of digital art they fall into.

Q.35

[Marks:1]

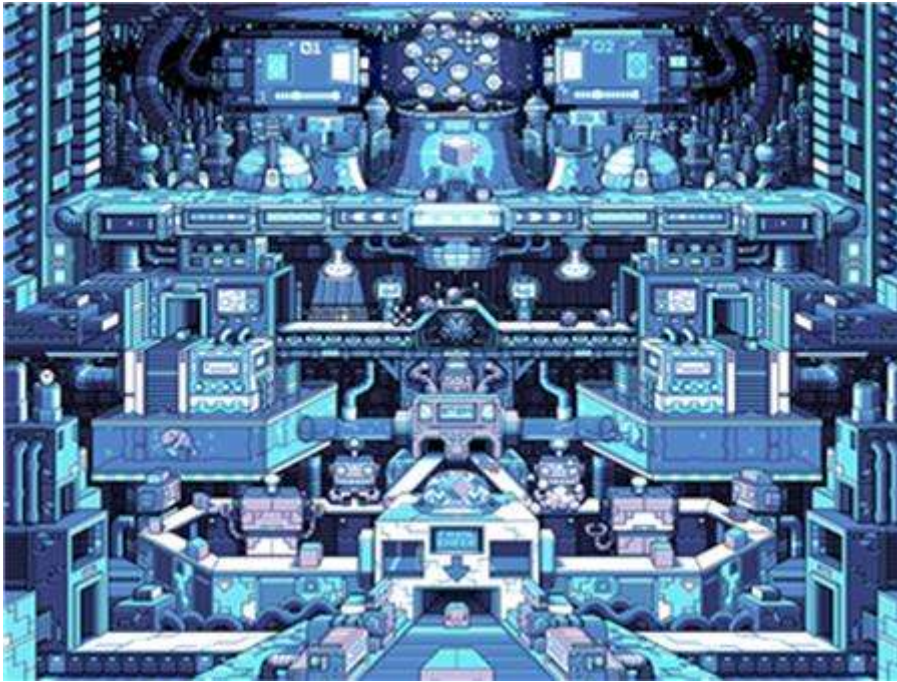


**Options :**

- a. (A)
- b. (B)
- c. (C)
- d. (D)

• **Correct Answer : d**

Q.36



[Marks:1]

Options :

- a. (A)
- b. (B)
- c. (C)
- d. (D)

• Correct Answer : a

Q.37



[Marks:1]

Options :

- a. (A)
- b. (B)
- c. (C)
- d. (D)

- **Correct Answer : c**

Q.38

[Marks:1]



**Options :**

- a. (A)
- b. (B)
- c. (C)
- d. (D)

- **Correct Answer : d**

**Paragraph:**

Each day, most of us depend on caffeine to wake up and be ready for the day to cope with the fast-paced life. Consumption of caffeine is an ancient habit. In fact, this natural stimulant is one of the most commonly consumed beverages in the world. Though caffeine is known for its ill effects on health, it's one of the best sources to provide us with that extra "energy" that makes us get going. Many of us rely on caffeine to stay alert and improve concentration. Despite all these apparent benefits, the quantity of caffeine intake should be kept under check.

Adults are still considered safe to have a dose of caffeine, adolescents and young adults should be very cautious while consuming it. So the bottom line lies with the fact "when is it safe to start the consumption of caffeine" and "how much to consume". If we're careful enough to keep in mind these two questions, we shall definitely be awarded the title 'Conscious Consumer' of caffeine.

Q.39 What does caffeine do to our brain?

[Marks:1]

**Options :**

- a. Fatigue
- b. headaches
- c. Induces sleep
- d. Brings alertness

- **Correct Answer : b**

Q.40 Who should be very cautious while consuming caffeine?

[Marks:1]

**Options :**

- a. Adults
- b. Children
- c. Adolescents
- d. Pregnant women

• **Correct Answer : c**

Q.41 The key to consuming caffeine in our daily life is

[Marks:1]

**Options :**

- a. In moderation
- b. As per the market promoters
- c. Addiction
- d. No consumption at all

• **Correct Answer : a**

Q.42 Which is the most commonly consumed beverages in the world?

[Marks:1]

**Options :**

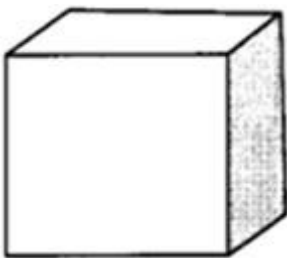
- a. Aerated drinks
- b. Caffeine
- c. Tea
- d. Energy drinks

• **Correct Answer : b**

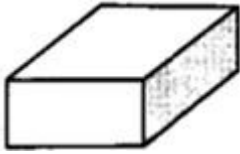
**Paragraph:**

You may have heard of 3-D movies. You may have even seen one. The D in 3-D stands for dimensional. A dimension is a path and something that can be measured. Flat things can be measured in two ways. They can be measured by sides-length and width. That's why flat things are sometimes called 2-D or two-dimensional. Three-dimensional things can be measured in three ways. They can be measured by length and width like flat things and they can also be measured by their height. Height is what lets them come up off the paper or the screen. Let's look at some of the most common solids.

A cube has six square sides. The sides are called faces



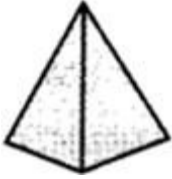
A rectangular prism has six sides that are all shaped like rectangles.



A sphere is shaped like playground ball.



A square pyramid has a square on the bottom, and four triangle-shaped sides.



Answer the following 4 questions based on the text outlined by choosing the appropriate option

Q.43 What is a dimension?

[Marks:1]

Options :

- a. length
- b. height
- c. width
- d. path

• **Correct Answer : d**

Q.44 What are three-dimensional shapes called in math?

[Marks:1]

Options :

- a. blocks
- b. solids
- c. faces
- d. object

• **Correct Answer : b**

Q.45 How can flat, two-dimensional things be measured?

[Marks:1]

Options :

- a. height and width
- b. length and width
- c. length and height
- d. none

• **Correct Answer : b**

Q.46 What does a sphere look like in 2D?

[Marks:1]

Options :

- a. Circle
- b. Arc
- c. Ellipse
- d. Concave

• **Correct Answer : a**

**Paragraph:**

Vernacular architecture is an architectural language built in direct response to readily available materials, climate and the sheltering needs of the local people. Materials of construction and form making navigate a curious mix of heat, cold, dryness, humidity and heavy rainfall using indigenous materials.

Some of the indigenous roofing materials used in vernacular constructions of tropical and temperate climates are:

**(A)Bamboo** is split and used as roof tiles or woven into mats to use as partitions

**(B)Cane** being a flexible stem provides many opportunities for the design and shape of the roof

**(C)Grass thatch** is a very old roofing method wherein the grass is densely packed and layered to shed water away from the roof.

**(D)Coconut leaves** are used for roofing in their natural form, as they are cut from the tree or alternatively the leaf blades are woven into mats.

From the given set of 4 images identify the vernacular roofing material.

Q.47



[Marks:1]

Options :

- a. (A)
- b. (B)
- c. (C)
- d. (D)

• **Correct Answer : b**

Q.48



[Marks:1]

Options :

- a. (A)
- b. (B)
- c. (C)
- d. (D)

• Correct Answer : c

Q.49



[Marks:1]

Options :

- a. (A)
- b. (B)
- c. (C)
- d. (D)

• Correct Answer : d

Q.50



[Marks:1]

Options :

- a. (A)
- b. (B)
- c. (C)
- d. (D)

• **Correct Answer : a**

Q.51 Construction of cavity walls as external walls to protect the building from the outside heat or cold as [Marks:2]  
the hollow space between two walls act as an

Options :

- a. Destructive material
- b. Insulating material
- c. Fire proofing material
- d. Cladding material

• **Correct Answer : b**

Q.52 Which of the following terms is used to indicate the *art of building* structures in stones? [Marks:2]

Options :

- a. Bond
- b. Prefabrication
- c. Masonry
- d. Load bearing

• **Correct Answer : c**

Q.53 Which among the following structures combines the columnar and trabeate style of building with that of the arcuate? [Marks:2]

Options :



a.

Stonehenge, UK



b.

Colosseum, Rome



c.

Chord Bridge, Israel



d.

Kailasanatha temple, Ellora

• **Correct Answer : b**

Q.54 The Padmanabhapuram Palace, a Travancore era palace at Thuckalay is predominantly built with which material [Marks:2]

Options :

- a. Laterite stone
- b. Sandstone
- c. Timber

d. Marble

- **Correct Answer : c**

Q.55 Which of the following were **not part** of the Indus Valley civilization?

[Marks:2]

**Options :**

- Underground drainage system
- Figurines in clay
- Citadels
- Temples

- **Correct Answer : d**

Q.56 Which state emerges on top of the Composite Good Governance Index, 2021?

[Marks:1]

**Options :**

- Gujarat
- Maharashtra
- West Bengal
- Kerala

- **Correct Answer : a**

Q.57 In June 1992, more than 100 states met for the first International Earth Summit in?

[Marks:1]

**Options :**

- Madrid, Spain
- Paris, France
- New York, USA
- Rio de Janeiro, Brazil

- **Correct Answer : d**

Q.58 'Prakriti', which was recently launched, is mascot to create awareness in which field?

[Marks:1]

**Options :**

- Plastic pollution
- Gender equality
- LGBTQ rights
- Skill Development

- **Correct Answer : a**

Q.59 Which is the oldest architectural school in India?

[Marks:1]

**Options :**

- School of Architecture at MS University, Baroda

- b. Sir J J School of Architecture, Mumbai
- c. School of Architecture at Arts College, Lucknow
- d. Department of Architecture, IIT, Khaaghpur

• **Correct Answer : b**

Q.60 Which of the following lakes were formed due to tectonic activities?

[Marks:1]

**Options :**

- a. Lohtak
- b. Wular
- c. Dal
- d. Bhimtal

• **Correct Answer : b**

Q.61 If dimensions of Paper size A4 is 210mm x 297mm, what are the dimensions of Paper size A6?

[Marks:1]

**Options :**

- a. 420mm x 297mm
- b. 105mm x 290mm
- c. 210mm x 148mm
- d. 105mm x 148mm

• **Correct Answer : d**

Q.62 In which year was the 'RIBA Gold Medal' awarded to Ar. Balakrishna V Doshi

[Marks:1]

**Options :**

- a. 2022
- b. 2017
- c. 2018
- d. 2019

• **Correct Answer : c**

Q.63 EIGHTY: GIEYTH :: OUTPUT : ?

[Marks:2]

**Options :**

- a. TUOTUP
- b. TUOUTP
- c. UTOPTU
- d. UOTUPT

• **Correct Answer : a**

Q.64 Choose one number which is similar to the number in the given set of three numbers. Given set: 363,489, 579. [Marks:2]

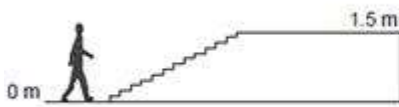
Options :

- a. 562
- b. 471
- c. 382
- d. 281

• **Correct Answer : b**

Q.65 Identify the ideal sectional diagram if the person has to reach from zero level to 1.5m level, assuming the stairs are designed with the standard rise of 150mm. [Marks:2]

(A)



(B)



(C)



(D)

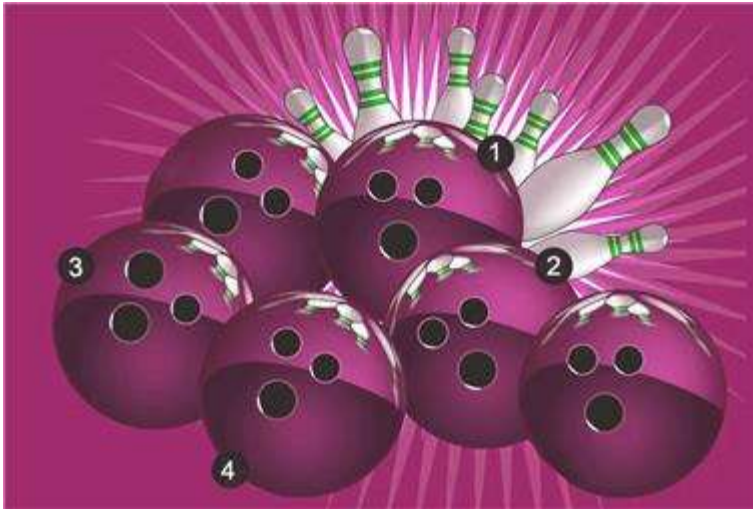


Options :

- a. (A)
- b. (B)
- c. (C)
- d. (D)

• **Correct Answer : c**

Q.66 Find the ODD ball out from the given image below from the given options of ball 01, ball 02, ball 03 and ball 04. [Marks:2]



Options :

- a. Ball 01
- b. Ball 02
- c. Ball 03
- d. Ball 04

• **Correct Answer : c**

Q.67 For the given font how many alphabets (letters) can be divided as equal parts along both vertical and horizontal axis? [Marks:2]  
horizontal axis?

**A B C D E F G H I**  
**J K L M N O P Q**  
**R S T U V W X Y Z**

Options :

- a. Six
- b. Three
- c. Four
- d. Two

• **Correct Answer : c**

Q.68 Choose any four most appropriate principles of design which can be commonly observed in the given image. [Marks:2]  
image.

(Marks will be awarded only if all answers are right)



**Options :**

- a. Layers
- b. Fluidity
- c. Symmetry
- d. Repetition
- e. Imbalance
- f. Focal point
- g. Foreshortening
- h. Distortion
- i. Concentric

• **Correct Answer :** a, c, d, f, i

**Q.69** Choose any four most appropriate principles / elements of design which can be commonly observed [Marks:2]  
in the given image.

(Marks will be awarded only if all answers are right)



**Options :**

- a. Progression
- b. Distortion
- c. Asymmetry
- d. Radial

- e. Parallelism
- f. Focal point
- g. Rhythm
- h. Static
- i. Dynamic

• **Correct Answer** : a, d, f, g, l

**Q.70** Choose the design attributes which are **NOT** suitable for the examples of dome construction given below. [Marks:2]

(Marks will be awarded only if all answers are right)



Sanchi Stupa



Reichstag dome,

**Options :**

- a. Stone and glass
- b. Unstable & Asymmetry
- c. Dynamism & Fluidity
- d. Imbalance & Movement
- e. Heavy & Light
- f. Opaque & Transparent
- g. Irregular & Fluid
- h. Organic and Inorganic
- i. Stable and Symmetry

• **Correct Answer** : b, c, d, g, h

**Q.71** Identify the popular place from the detail of an edifice given below:

[Marks:2]

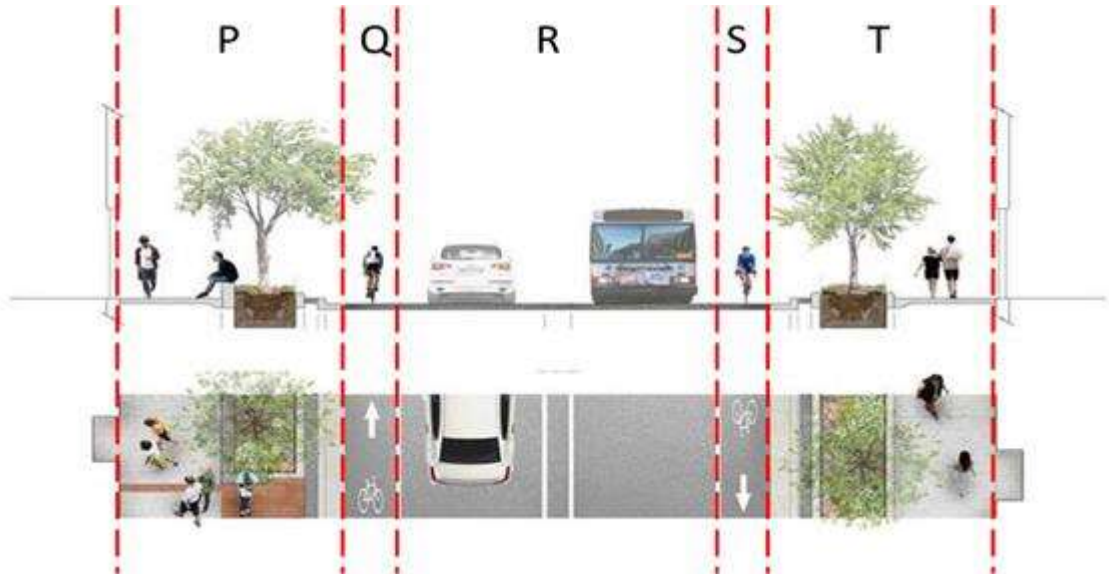


**Options :**

- a. Surya Kund, Modhera
- b. Ancient Nalanda University
- c. Jantar Mantar, Jaipur
- d. Qutb Minar, Delhi
- **Correct Answer : c**

Q.72 Identify the zones which are “pedestrian” in the given street views.

[Marks:2]



Options :

- a. P and S only
- b. Q and S only
- c. P and T only
- d. Q and T only
- **Correct Answer : c**

Q.73 Identify the correct pair?

[Marks:2]

Options :

- a. Charles Chorea - IIM Bangalore
- b. Louis I Khan - IIM Ahmedabad
- c. Le Corbusier - IIM Bangalore
- d. B V Doshi - IIM Ahmedabad
- **Correct Answer : b**

Q.74 Arrange the given architectural monuments in the descending order based on the year of construction.

[Marks:2]

P



Q



R



S



Options :

- a. P - Q - S - R
- b. Q - P - S - R
- c. Q - S - P - R
- d. P - S - Q - R

• **Correct Answer : c**

Q.75 Who is the architect of the building given in the image below?

[Marks:2]



Options :

- a. Mies Van der Rohe
- b. Frank L Wright
- c. Philip Johnson
- d. Le Corbusier

• **Correct Answer : d**

Q.76 Identify the flower

[Marks:2]



Options :

- a. Neel kamal
- b. Passion flower
- c. Gulmohar
- d. Amaltas flower
- **Correct Answer : b**

Q.77 Identify

[Marks:2]

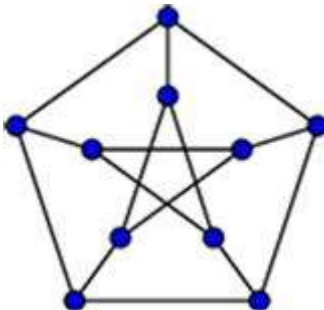


Options :

- a. Traditional water heater
- b. Hand grenade
- c. Insect
- d. Part of Turbine
- **Correct Answer : c**

Q.78 Identify the image below

[Marks:2]



Options :

- a. Thomas pentagon
- b. Petersen Graph
- c. Raman Vertices

d. Max Star

- **Correct Answer : b**

Q.79 Identify the product given below

[Marks:2]



**Options :**

- a. Pressure Cooker
- b. Car door knob
- c. Water filter
- d. Tea kettle

- **Correct Answer : d**

Q.80 Identify the country with the national flag shown below

[Marks:2]



**Options :**

- a. Brazil
- b. Spain
- c. Sri Lanka
- d. Israel

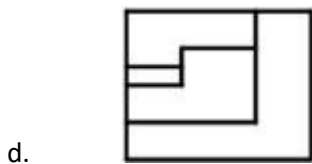
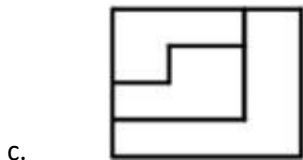
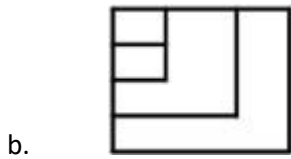
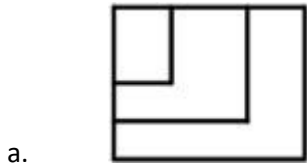
- **Correct Answer : d**

Q.81 The 3- D figure shows the view of an object. Identify the correct front view from amongst the answer figures.

[Marks:2]

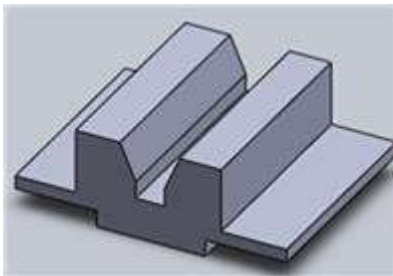


**Options :**

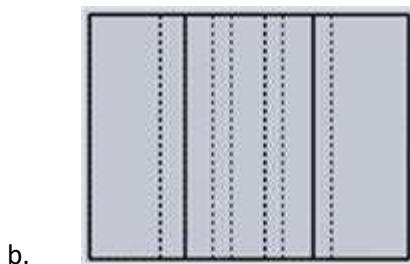
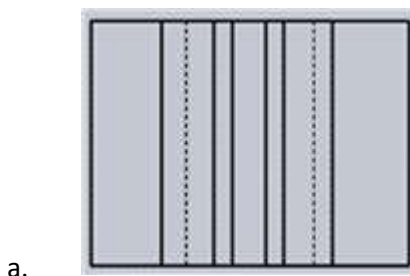


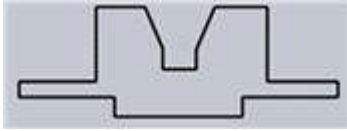
• **Correct Answer : c**

**Q.82** The 3- D figure shows the view of an object. Identify the correct **top** view from amongst the answer figures. [Marks:2]



**Options :**

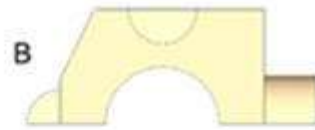
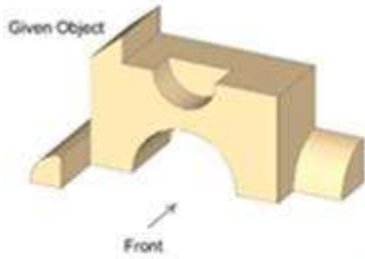




d.

- **Correct Answer : a**

**Q.83** Identify the correct side elevation view for the given 3D object from the view point of the arrow indicated. [Marks:2]



**Options :**

- a. A
- b. B
- c. C
- d. D

- **Correct Answer : \*bonus(If Attempted)\***

**Q.84** Where do the projection lines converge in a perspective sketch? [Marks:2]

**Options :**

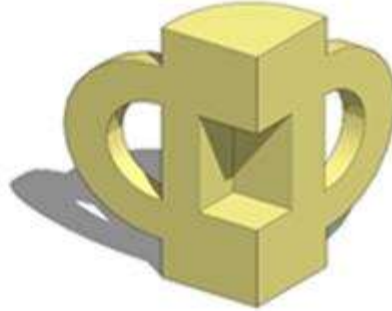
- a. Ground line
- b. Vanishing point
- c. Horizon line
- d. Eye level

- **Correct Answer : b**

**Q.85** For the given object below, how many numbers of surfaces make the 3D object? [Marks:2]



View 01



View 02

Options :

- a. 12 surfaces
- b. 15 surfaces
- c. 16 surfaces
- d. 21 surfaces

• **Correct Answer : b**

Q.86 Which out of the following color models specifies green as a basic color?

[Marks:2]

Options :

- a. Munsell Color System
- b. Natural Color System
- c. RGB
- d. CMYK

• **Correct Answer : a**

Q.87 The sequence of colors in the present day **Google** Logo is

[Marks:2]

Options :

- a. Blue, Red Yellow, Blue, Green , Red
- b. Blue, Yellow, Red, Blue, Green, Red
- c. Blue, Red, Yellow, Green, Red, Blue
- d. Blue, Yellow, Red, Green, Blue, Red

• **Correct Answer : a**

Q.88 Why is the ocean blue in color?

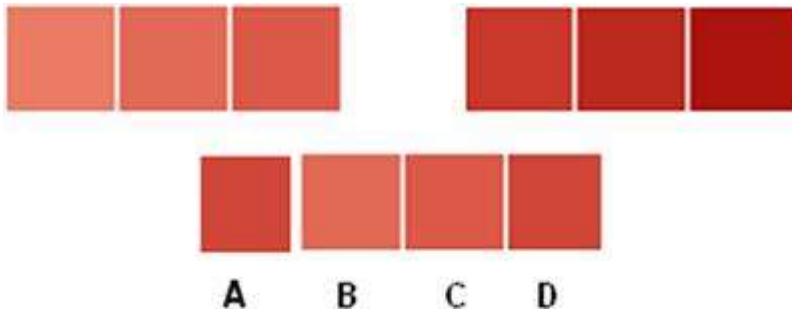
[Marks:2]

Options :

- a. They reflect the sky blue color
- b. It is because of the color of the algae in water
- c. Absorption of the red, orange and yellow color of the spectrum and reflecting back of only the blue color
- d. The water body reflects the plant life at the bottom of it

- **Correct Answer : c**

**Q.89** In the color chart given below one of the hues is missing. From among the choices given below identify the one which is the right fit. [Marks:2]



**Options :**

- A
- B
- C
- D

- **Correct Answer : a**

**Q.90** The chair named the Pantone chair, which was designed by Verner Panton was made with a new material in the year 1967. What was the material? [Marks:2]



**Options :**

- Glass
- Nylon
- Plastic
- Stainless steel

- **Correct Answer : c**

**Q.91** Identify the four most important visual principles in the given two dimensional black and white composition [Marks:2]

(Marks will be awarded only if all answers are right)



**Options :**

- a. Contrast
- b. Dynamic
- c. Symmetry
- d. 3 D effect
- e. Depth
- f. Texture
- g. Direction
- h. Parallelism
- i. Pattern

- **Correct Answer : b, d, e, f, h**

**Q.92** Identify the four most important visual principles/ elements in the given black and white photograph [Marks:2]  
given below.

(Marks will be awarded only if all answers are right)



**Options :**

- a. Vibration
- b. Focal point
- c. Asymmetric
- d. One point perspective
- e. Divergence
- f. Pattern
- g. Rhythm
- h. Parallelism
- i. Fluidity

- **Correct Answer :** b, d, f, g, h

**Q.93** Identify the four most important visual elements/ principles in the colour composition given below. [Marks:2]

(Marks will be awarded only if all answers are right)



**Options :**

- a. Fluidity
- b. Depth
- c. Pattern
- d. Repetition
- e. Convergence
- f. Contrast
- g. Symmetry
- h. Figure ground
- i. Distortion

- **Correct Answer :** a, c, e, f

Q.94 To which era does this form of writing belong to?

[Marks:1]



Options :

- a. Ancient Egyptian
- b. Ancient Sumerian
- c. Mayan
- d. Indus Valley

• **Correct Answer : b**

Q.95 **Vincent Van Gogh** was a post-Impressionist artist. He used bold colors and dramatic brush strokes to show his feelings. A painting that shows this best is, “A Starry Night.” [Marks:1]

What do the swirls of clouds, dark structures, moons, planets and winds in this painting depict?



“The Starry Night” by VINCENT VAN GOGH

Options :

- a. Contemplation
- b. Anger
- c. Piety
- d. Love

• **Correct Answer : a**

Q.96 **Color can change the sense of amplitude and size of a room.**

[Marks:1]

What spatial effect does it have in the images given below:

(Marks will be given only if all answers are right)

Options :



a.



b.



c.



d.

a. Narrows

b. Enlarges

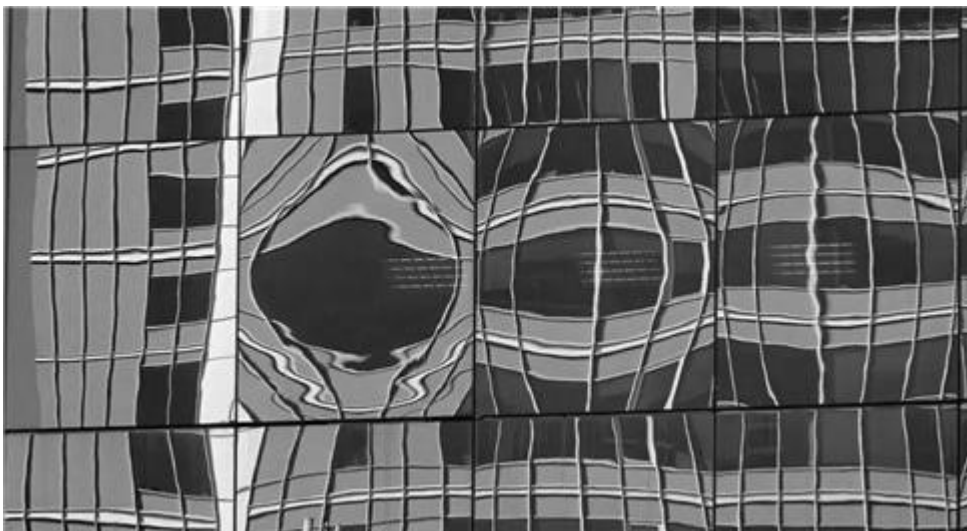
c. Highlights

d. Shortens

• **Correct Answer** : a-s,b-r,c-q,d-p

Q.97 This black and white image is a depiction of \_\_\_\_\_

[Marks:2]



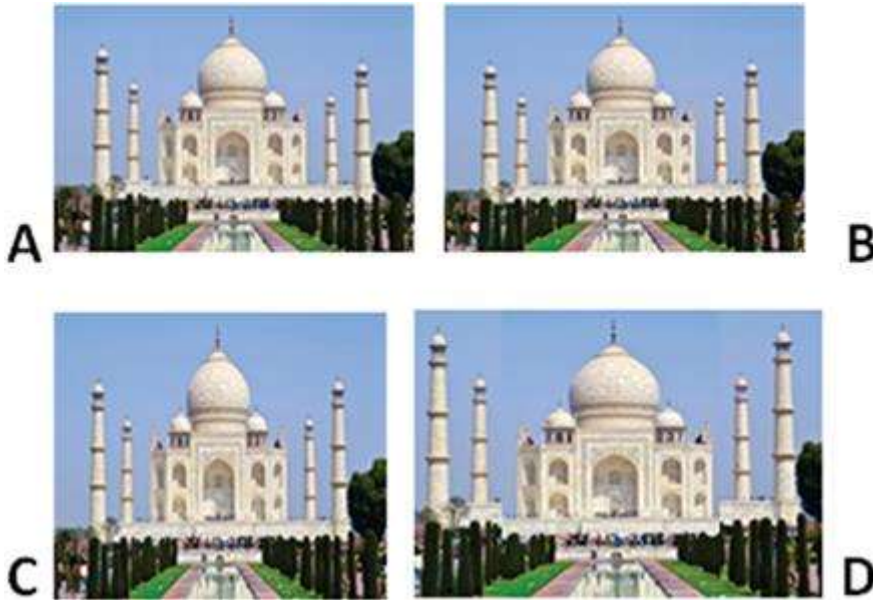
Options :

- a. Reflection in water
- b. Dented metal
- c. Distortion of glass
- d. Wall mural

• **Correct Answer : c**

**Q.98** Only one of the four images given below is true, correct and undistorted. Identify the image

[Marks:2]



**Options :**

- a. A
- b. B
- c. C
- d. D

• **Correct Answer : b**

**Q.99** Identify the correct logo

[Marks:2]

**Options :**





c.

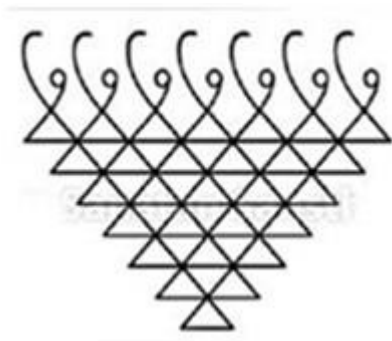


d.

- **Correct Answer : b**

Q.100 What does the graphical interpretation illustrated below symbolize?

[Marks:2]



**Options :**

- a. Lakshmi
- b. Kundali
- c. Musical instrument
- d. Saraswati

- **Correct Answer : d**

Q.101 Rahul walks 20 km towards North. He turns left and walks 40 km. He again turns left and walks 20 km. Finally, he moves 20 km after turning to the left. How far is he from his starting position?

[Marks:2]

**Options :**

- a. 20 km
- b. 30 km
- c. 50 km
- d. 60 km

- **Correct Answer : a**

Q.102 If South-East becomes North, North-East becomes West and so on, what will South become

[Marks:2]

**Options :**

- a. North east

- b. North west
- c. South
- d. South west

• **Correct Answer : b**

**Q.103** In a group of dogs and crows the number of legs is more than 2 times the number of heads by 20. [Marks:2]  
What is the number of dogs?

**Options :**

- a. 10
- b. 20
- c. 25
- d. 33

• **Correct Answer : a**

**Q.104** Showing the man receiving the prize, Saroj said, "He is the brother of my uncle's daughter." Who is [Marks:2]  
the man to Saroj?

**Options :**

- a. Son
- b. Cousin
- c. Nephew
- d. Brother-in-law

• **Correct Answer : b**

**Q.105** Without resolving anything yourself, choose the conclusion which logically follows from the given [Marks:2]  
statement - "*Every library has books*"

**Options :**

- a. Books are only in a library
- b. Libraries are meant for books only
- c. No library is without books
- d. Some libraries do not have readers

• **Correct Answer : c**

**Q.106** Without resolving anything yourself, choose the conclusion which logically follows from the given [Marks:2]  
statement - "*All that glitters is not gold*"

**Options :**

- a. Nonmetals also glitter
- b. Only gold glitters
- c. Not all metals glitter
- d. Glittering things may be deceptive

- **Correct Answer : d**

Q.107 Without resolving anything yourself, choose the conclusion which logically follows from the given statement - "If you were alone in a dark room, with only one matchstick and an oil lamp, a fireplace, and a candle to choose from, which would you light first?" [Marks:2]

Options :

- a. oil lamp
- b. fireplace
- c. matchstick
- d. candle

- **Correct Answer : c**

Q.108 Identify the countries whose flags are given below: [Marks:2]  
(Marks will be awarded only if all answers are right)

Options :



a.



b.



c.



d.

- a. Iceland
- b. Australia
- c. Norway

d. New Zealand

- **Correct Answer :** \*bonus(If Attempted)\*

Q.109 How much is a Baker's dozen?

[Marks:2]

**Options :**

- a. 24
- b. 12
- c. 11
- d. 13

- **Correct Answer :** d

Q.110 Match the architect and the building he designed:

[Marks:2]

(Marks will be awarded only if all answers are right)

**Options :**

- a. Charles Correa
- b. Raj Rewal
- c. Laurie Baker
- d. Bimal Patel
- a. Dakshinchitra, Chennai
- b. Sabarmathi River front development project
- c. Asian Games village, N Delhi
- d. Jawahar Kala Kendra, Jaipur

- **Correct Answer :** a-s,b-r,c-p,d-q

Q.111 Identify four architectural/ interior components in the image given below:

[Marks:2]

(Marks will be awarded only if all answers are right)



**Options :**

- a. Pergola
- b. Rafters

- c. Stone masonry
- d. Hearth
- e. Cabinets
- f. Laminated floor
- g. Paneled door
- h. Wardrobe
- i. Ledge

• **Correct Answer :** b, d, e, f, i

**Q.112** Identify four situations from the following listed that depict Newton's Law of Inertia (First Law) [Marks:2]

(Marks will be awarded only if all answers are right)

**Options :**

- a. Car turns left and you slide to the right
- b. A loaded truck versus an unloaded truck
- c. Two cars colliding head on
- d. The magician pulls a tablecloth out from under a pile of dishes
- e. Accelerating and decelerating a car
- f. Gun being fired
- g. When riding a horse, the horse suddenly stops and you fly over its head
- h. Car suddenly stops and you strain against the seat belt
- i. Sprinklers rotating

• **Correct Answer :** a, d, g, h

**Q.113** Identify the four most appropriate architectural components and elements of architectural composition that you find in the image of one of the courts of the Jawahar Kala Kendra, Jaipur [Marks:2]

designed by Ar. Chares Correa.

(Marks will be awarded only if all answers are right)



**Options :**

- a. Open Air theatre
- b. Geometric
- c. Murals
- d. Centrality
- e. Dormer window
- f. Skylights
- g. Order
- h. Curved columns
- i. Stage

• **Correct Answer** : a, b, d, g, l

**Q.114** Identify any four architectural components that you find in the interior image of a palatial dwelling [Marks:2]  
found in Chettinad, TN.

(Marks will be awarded only if all answers are right)



**Options :**

- a. Stone beams
- b. Wooden columns
- c. Raised plinth
- d. Illusions
- e. Rain water harvesting
- f. Grid slab
- g. Geometric designs
- h. Brackets
- i. False ceiling

• **Correct Answer** : b, c, g, h, l

**Q.115** Identify the four most appropriate architectural components and volumes that you find in the image [Marks:2] of the Belgian Embassy designed by Satish Gujral at Delhi.

(Marks will be awarded only if all answers are right)



**Options :**

- a. Stepped down terraces
- b. Rain water gutter
- c. Community space
- d. Cylinders
- e. Murals
- f. Sit out
- g. Exposed brick work
- h. Grid slab
- i. Domes

- **Correct Answer :** a, d, f, g, i

**Paragraph:**

Carefully observe the given image with polar bears in different postures and costumes. You can view the image for 30 seconds after which it will disappear. You will then answer two questions based on the image.

**Caution:** The image once viewed cannot be viewed again.



Q.116 In the given image, how many polar bears were sitting on their hind legs? [Marks:3]

- **Correct Answer : 3**

Q.117 In the given image identify the combinations of correct sweater colours and numbers. [Marks:3]

**Options :**

- One red sweater and two yellow sweaters
- Two brown sweaters and two yellow sweaters
- Two red sweaters and one blue sweater
- Two bluish-green sweaters and one red sweater

- **Correct Answer : c**

**Paragraph:**

Carefully observe the given image depicting 4 faces using plates as the base and face features formed with many different objects. You can view the image for 30 seconds after which it will disappear. You will then answer **two questions** based on the image.

**Caution:** The image once viewed cannot be viewed again.



Q.118 How many clips of the type as indicated below were found in the picture? [Marks:3]



- Correct Answer : 3

Q.119 Which plate depicted the face of a small child? [Marks:3]

Options :

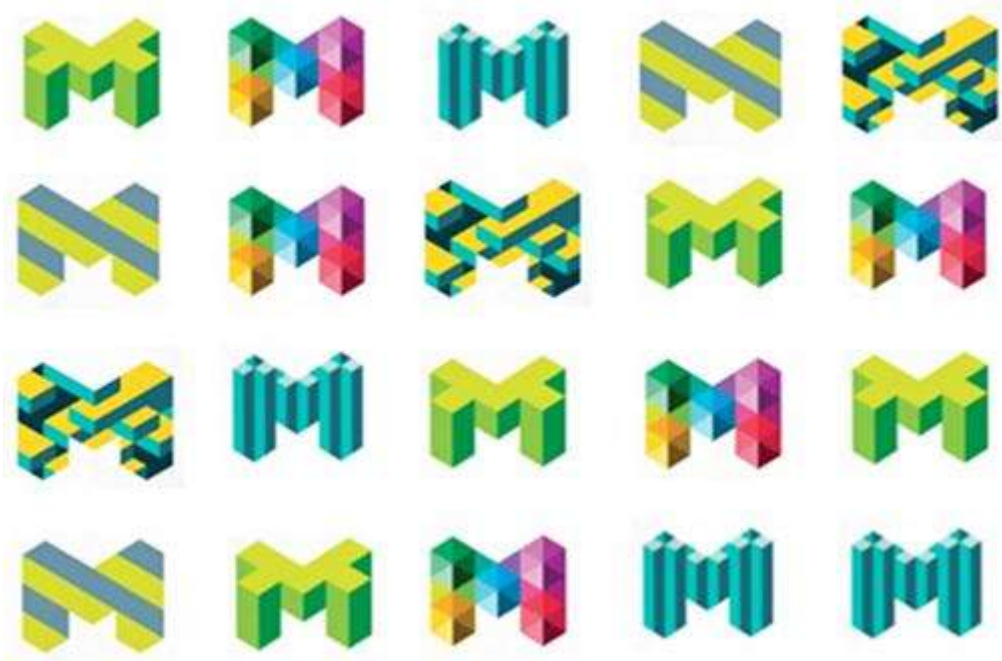
- A
- B
- C
- D

- Correct Answer : a

Paragraph:

Carefully observe the given image set depicting colorful logo designs for the city of Melbourne. While some logos are 3D others are 2D. You can view the image for 30 seconds after which it will disappear. You will then answer **two questions** based on the image.

**Caution:** The image once viewed cannot be viewed again.



Q.120 How many times did the logo with the said colour combination appear in the given set?

[Marks:3]



- Correct Answer : 4

Q.121 There was a 2-D (2 Dimensional) logo in the given set. How many colours were used in the 2-D logo [Marks:3]

- Correct Answer : 2

**Paragraph:**

Carefully observe the given image set depicting bears wearing colorful clothes and accessories such as shoes, headgear and coats, etc. You can view the image for 30 seconds after which it will disappear. You will then answer **two questions** based on the image.

**Caution:** The image once viewed cannot be viewed again.



Q.122 How many bears were not wearing headgear?

[Marks:3]

- **Correct Answer : 3**

Q.123 How many bears were wearing red pants/ trousers?

[Marks:3]

**Options :**

- a. 4
- b. 8
- c. 5
- d. 6

- **Correct Answer : c**

**Paragraph:**

Carefully observe the given image depicting a kid's study corner with wall hangings above the table and objects on the table and around as well. You can view the image for 30 seconds after which it will disappear.

You will then answer **two questions** based on the image.

**Caution:** The image once viewed cannot be viewed again.



Q.124 How many cubes were on the study table?

[Marks:3]

- **Correct Answer : 5**

Q.125 What was the color of the chair?

[Marks:3]

**Options :**

- a. White
- b. Brown
- c. Black
- d. Green

- **Correct Answer : d**